



Company Profile

GRID DESIGN SOLUTIONS Pvt. Ltd.

Index

Sl No	Description	Page Number
1.	About Us	03
2.	The Company	05
3.	Philosophy of the Company	07
4.	Keeping Promises	07
5.	Building Relationships	09
6.	Location	10
7.	Management & Structure	12
8.	Quality	14
9.	Areas of Expertise	14
10.	Clients	16
11.	Key staffs & Project experience	18
12.	Track record of Delivery	19
12.	Client Support	21
13.	How does it Work ?	23 -24
14.	Contact Details	26
15.	Organization Chart	28
16.	Sample Drawings	30 -



About Us

About Us

Grid Design Solutions Pvt Ltd. India (GDS). We are in the field of preparing structural designing & drafting for leading consultancies in GCC. Our office is located in Technopark, Trivandrum, Kerala, India. We have well experiences Structural Engineers and CAD professionals with us.

The term structural drawing can be defined as a set of drawings that defines the structural part of the building and their relationship with each other. These structural drawings can include foundation plans and details, wall sections, framing plans and details, column and beam details, and other plans, details, schedules necessary to form the structural components of the building or structure. Integrity of the design is a significant factor in the structural drawing of the building. We analyze and compute the wide structural drawings configuration which can be dynamic and static with advanced software's like STAAD, E-Tabs, Procon etc.

GDS provide wide range of structural drawing services with the help of experienced expertise team that include engineers and draftsmen. We can assure your worlds class structural designing & drafting services at economical prices. We utilize the modern and furnished structural drawing technology for our clients that will enable to win their confidence and increase there expectation. Due to our attempt to provide quality and fulfill the objective of customer satisfaction, we have attained reputation in structural Designing & drawing field. The key ingredient of our success is our goal to offer world class solutions to our clients. We pride ourselves on relationships we have been able to build with our clients by constantly exceeding their expectations. We now act as a role model in very short span of time by developing and providing structural Design & CAD drawing services.

We have well experienced team exclusively for preparing structural shop Drawings with Bar Bending Schedule in British Standards.



The Company

The Company

Promoted by a cross functional team of professionals in the fields of Engineering, Marketing and Finance, Grid Design Solutions (GDS) intends to provide value in the area of Design relating to Construction (including Architecture, Structure, Mechanical, Electrical and Plumbing) to clients in High Cost economies by providing high quality outputs at economical costs by leveraging the comparative advantage of availability and economical cost of resources in India.

GDS focuses on delivering world class quality by

- Working on British Standards in Multinational Environment.
- Recruiting highly skilled personnel
- Continuous In house training
- Continuous improvement in processes
- Benchmarking processes with world class design consultancy firms
- Conformance to standards set by International Standard Setting and Quality
- Systems organizations
- Investing in the latest technologies, techniques and training methodologies.



Philosophy of the Company **Keeping Promises**

Philosophy of the Company

- GDS will provide value to its clients by ensuring quality in services to clients
- The Strategy of GDS is to set up a total service provider providing services from design to drafting all drawings. The Structural Drafting Department will soon be followed by Architecture, MEP and Design Departments.

Keeping Promises....

- We uphold our business Values and keep our promises
- We can assure you world class drafting services for structural design at ecoSMnomical prices. We utilize the modern and furnished structural designing and drawing technology for our clients that will enable us to win their confidence and increase their expectation. Due to our approach to provide quality and fulfill the objective of customer satisfaction, we enable to build a reputation in structural designing & drawing field. The key ingredient of our success is our goal to offer world class solutions to our clients.



Building Relationships Location

Building Relationships

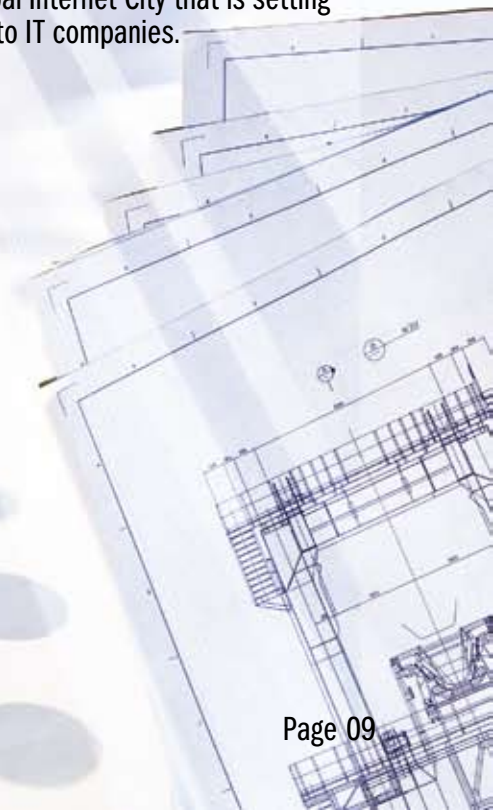
- We view Client contracts as opportunities to build relationships..... ones that go beyond contracts
- We pride ourselves on the relationships we have been able to build with our clients by constantly exceeding their expectations. We now act as a role model in very short span of time by developing and providing structural design & cad drawing services.

Infrastructure

- Dedicated High Speed Broadband Connections.
- Computers with latest configurations and software
- Separate Training Division for employees
- Good backup facilities

Location

- Kerala with its multi cultural ethos, un polluted environment and highly skilled technical work force is a dream come true for investors in the IT industry.
- Kerala has evinced tremendous interest from organizations across the globe with scores of IT companies starting operations daily.
- Infrastructure companies vie with each other to create built up spaces for IT companies. The latest in this respect is the Dubai Internet City that is setting up a multi million facilities in Kerala dedicated to IT companies.



Location Contd.....

- Trivandrum is the capital city of Kerala. It has an international airport and the main industries and IT and tourism. The world famous Kovalam Beach (one of the must see 50 places in the world) is situated in Trivandrum.
- The Government of Kerala has set up the Technopark in Trivandrum which now houses 140 companies (that includes multinational companies like McKinsey, Ernst and Young and large Indian companies like Infosys and Tata Consultancy Services) employing roughly 18,000 professionals.
- The facility has the infrastructure (24 hour power supply, broadband connectivity, staff amenities, air conditioning) for 24x7 operations.
- Kerala, and especially Trivandrum is blessed with a plentiful availability of skilled manpower from high quality Engineering institutions run by the Government and private establishments. These institutions offer degree, diploma and ITI courses in all relevant fields of engineering required by GDS. The Government College of Engineering in Trivandrum is a decades old institution that has produced thousands of skilled engineers working all over the world.
- GDS has set up operations in Technopark. The facility has world class infrastructure for producing high quality outputs.

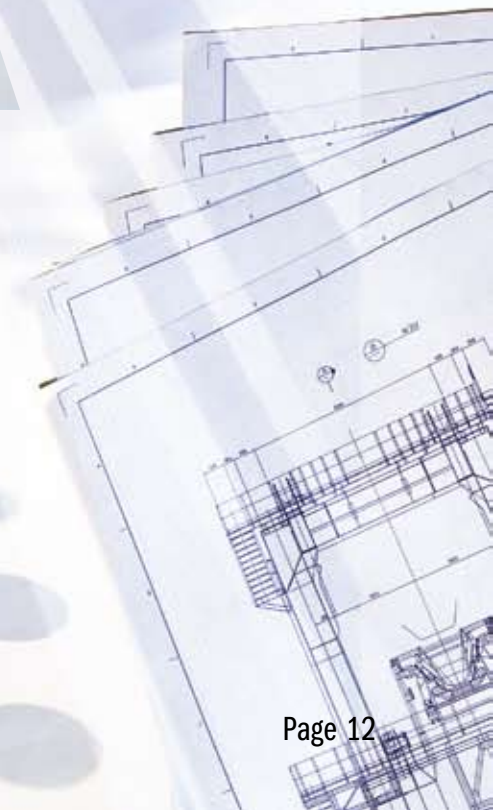




Management & Structure

Management and Structure

- The GDS facility in Technopark is managed by a director who is also a Chartered Accountant. A Team Leader (MTech Engineering – Civil) heads the technical team
- All our structural Engineers are well experienced in Middle East standards & norms.
- The Technical Team consists of Groups under Group Leaders under whom CAD technicians work. The qualification to be Group Leader is a Degree or Diploma in Civil Engineering from a premier institution
- CAD Technicians are recruited after passing a test at the company to assess their expertise in AUTO CAD. They are trained on British Standards by the Engineers





Quality Areas of Expertise

Quality

- Strict control is maintained over quality with a Two Step quality check over outputs. As a result GDS rarely gets reports of non compliance from clients.
- We provide service of experienced Civil & Structural Engineers & CAD technicians.
- Working on British Standards in Multinational Environment.

Areas of Expertise

Structural designing

- Strict control is maintained over quality with a Two Step quality check over outputs. As a result GDS rarely gets reports of non compliance from clients.
- We provide service of experienced Civil & Structural Engineers & CAD technicians.

Structural Drafting

- Professional experienced structural engineering. All staff trained to UK standards. Highly skilled CAD technician (GA, RC drawing & Structural Steel drawings)
- We have highly skilled team of CAD technicians at your service using most advanced tools and computer simulation software's to provide best drawings according to client requirements.



Clients

Clients

- Our client in Middle East includes prominent companies in the consulting and contracting spaces. We intend to expand our operations to cover US, UK and other country standards in a short while.
- GDS focuses on clients that appreciate its high commitment to the industry and aims at establishing long term relationships with its clients.
- Most of our assignments come from repeat customers who have experienced our work culture and commitment to quality.
- Competition is an advantage for us since clients can understand and appreciate the distinct difference in our approach and methodology of work. Those discerning clients who are particular about quality work delivered in time keep coming back to us for their requirements...



Key Staff Project Experience

Projects

- Our Engineers were all previously involved in prestigious projects in the Middle East
- We have executed a wide range of Designing & Drafting assignments including Special Purpose Buildings, Multistoried residential complex, Commercial complex, Malls, Stadium etc..
- We view challenging assignments as opportunities to put into practice our expertise in handling highly complex structures.



AI Fardan Residence, 3B+G+61+R
Location Doha, Qatar



DR. ALI FETAIS OFFICE BLDG (3B+G+14+P)
Location Doha, Qatar



Yohan Tower (2B+G+32+R+UR)
Location Doha, Qatar



10 King Road Office Tower, 2B+G+35
Location Jeddah, KSA



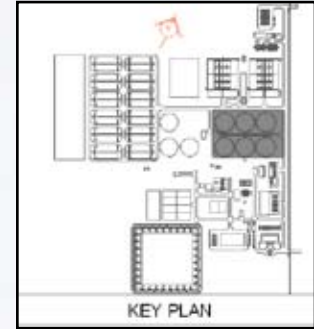
Students Centre, B+G+2
Location Doha, Qatar



St.Regis Hotel & Residential Tower, 2B+G+20
Location Doha, Qatar



Two Residential Building (B+G+7)
Location Doha, Qatar



Waste Water Treatment Plan in Kuwait
for Ministry of Public Works

Track Record of Delivery

- Our Track Record of Delivery of Projects is impeccable. To date, we have not delivered behind scheduled times because we appreciate the trust placed on us by our client and go out of the way to meet deadlines
- Most of the staff in our offices has field level experience on construction sites. They know the importance of delivering outputs that address ground level realities.
- We are aware of the pressure of time at the construction site. So we make it a point that we deliver at the committed time.
- We do not believe in the saying “Better late than never” simply because we never had an occasion to be late.



Client Support

Client Support

- 100% face to face interaction with the client.
- We keep in constant touch with the client for feedback and modifications. The flow of communications is maintained to ensure that changes in the client requirements are identified at its earliest stages and appropriate action is taken to ensure that such requirements are met in time.

Benefits

- No lost data or missing requirements Accurate Transcription
- with consistently over 99.5 % accuracy.
- Never a case of schedule slippage
- 24/ 7 hrs High speed Internet connectivity
- Lower rates
- Emphasis on quality in conjunction with productivity.
- Uninterrupted access
- Strict privacy & confidentiality
- Strictly controlled development and Production Environment
- Dedicated and devoted customer service
- Professional and progressive Management
- 100% data back up and protection from disaster.



How does it Work?

Here's what we can do for you

- You give us the details and we will Design & draft them into accurate working drawings
- We can Design & draft different CAD renderings or views of your building
We will follow the Design & drafting standards of your particular location/state
- We will edit your drawings for you, all you need to do is send us the edited sketch Information & we will make changes to the CAD drawing to match your sketch
- We work with your proper input.

What you get with our CAD drafting and Conversion Services

- Qualified Employees perform CAD drafting and conversion, not just CAD technicians.
- 98% accuracy as per internal Quality Check
- AI layering standards
- We can give u a dedicated/flexible team based on your requirements
We will train our employees on the drafting standards of your particular location /state, according to your specifications and guidance.

How does the process work?

- You enquire with us. We clarify the scope of work and send reference input and output files through an FTP site or any other electronic media.
- We understand your requirements. We send you samples of similar work executed so you can be sure of our quality standards
- We evaluate your requirements and send you a time and cost work order
- You sign the work order. If your project is complex and requires a pilot project, we will start working on it.
- We finalize the delivery model and start your project.

By outsourcing to GDS, you will experience up to 50% savings in labour costs in the long run, even though you will have to spend a little extra on managing your outsourcing project.

The background features a low-angle, upward-looking view of a modern skyscraper with a glass facade. The building's lines are slightly blurred, creating a sense of depth and height. In the bottom right corner, there is a technical drawing or architectural blueprint, showing structural elements like scaffolding or a framework. The overall color palette is light blue and white, with a prominent dark blue horizontal band across the middle.

Contact Details

We can be contacted at

Address : Grid Design Solutions (P) Ltd,
T-6, 7th Floor
Thejaswini, Technopark,
Kariyavattom P O
Trivandrum 695 581
Kerala, India.

Telephone : +91-471-3047598

Fax : +91-471-3047599

Email : mail@gdsind.com

Web : www.gdsind.com

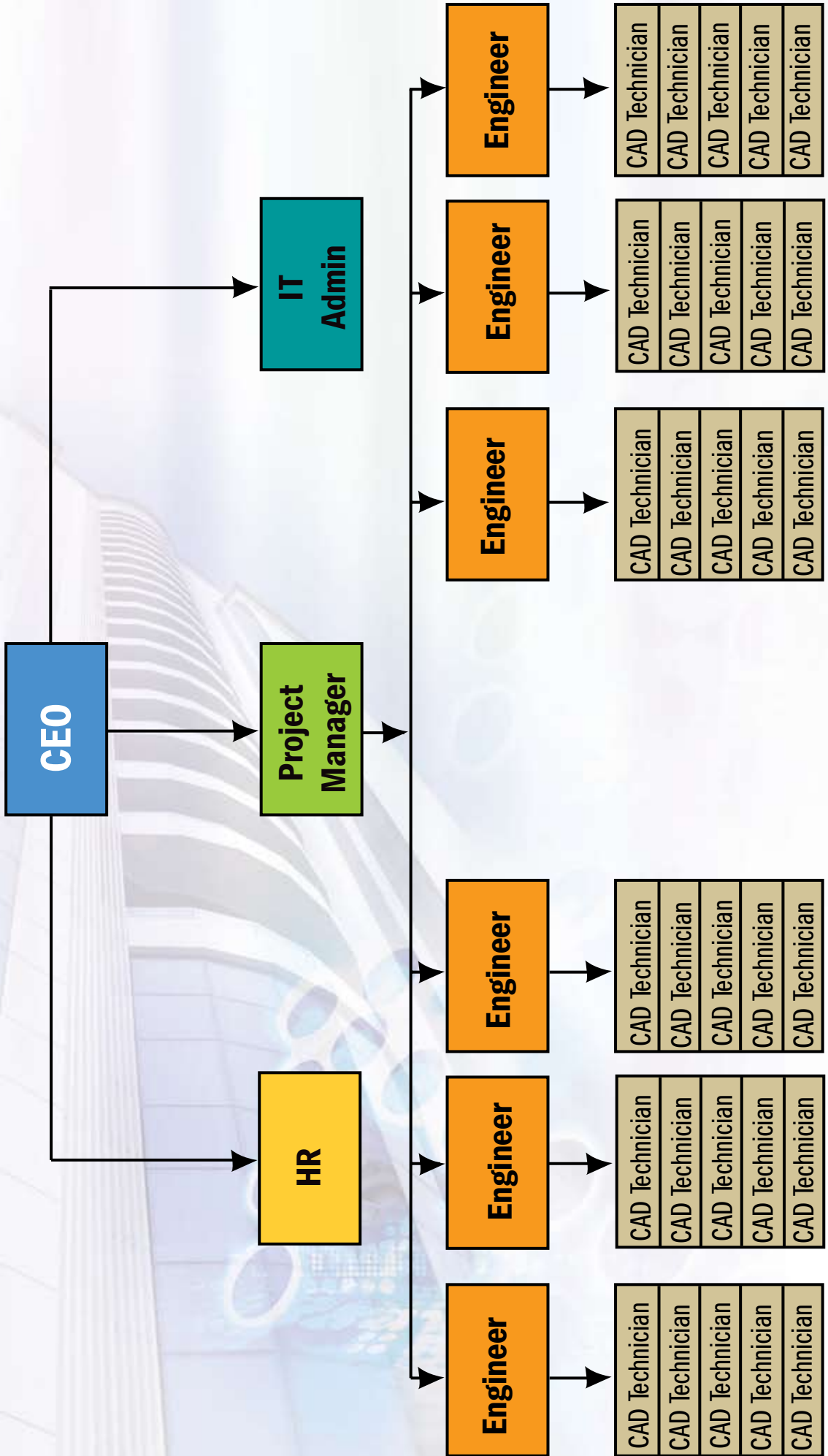
Direct Contact : Mr. Renjith K.K
Director,
Mob : +91 9895947478
Mob : +91 9961452999

Contact person in Doha-Qatar : Mr. Shefeen J.K
Mob : +9745431767



Organization Chart

TECHNICAL GROUP ORGANIZATION CHART - TYPICAL





Structural Design Drawings



Structural Shop Drawings