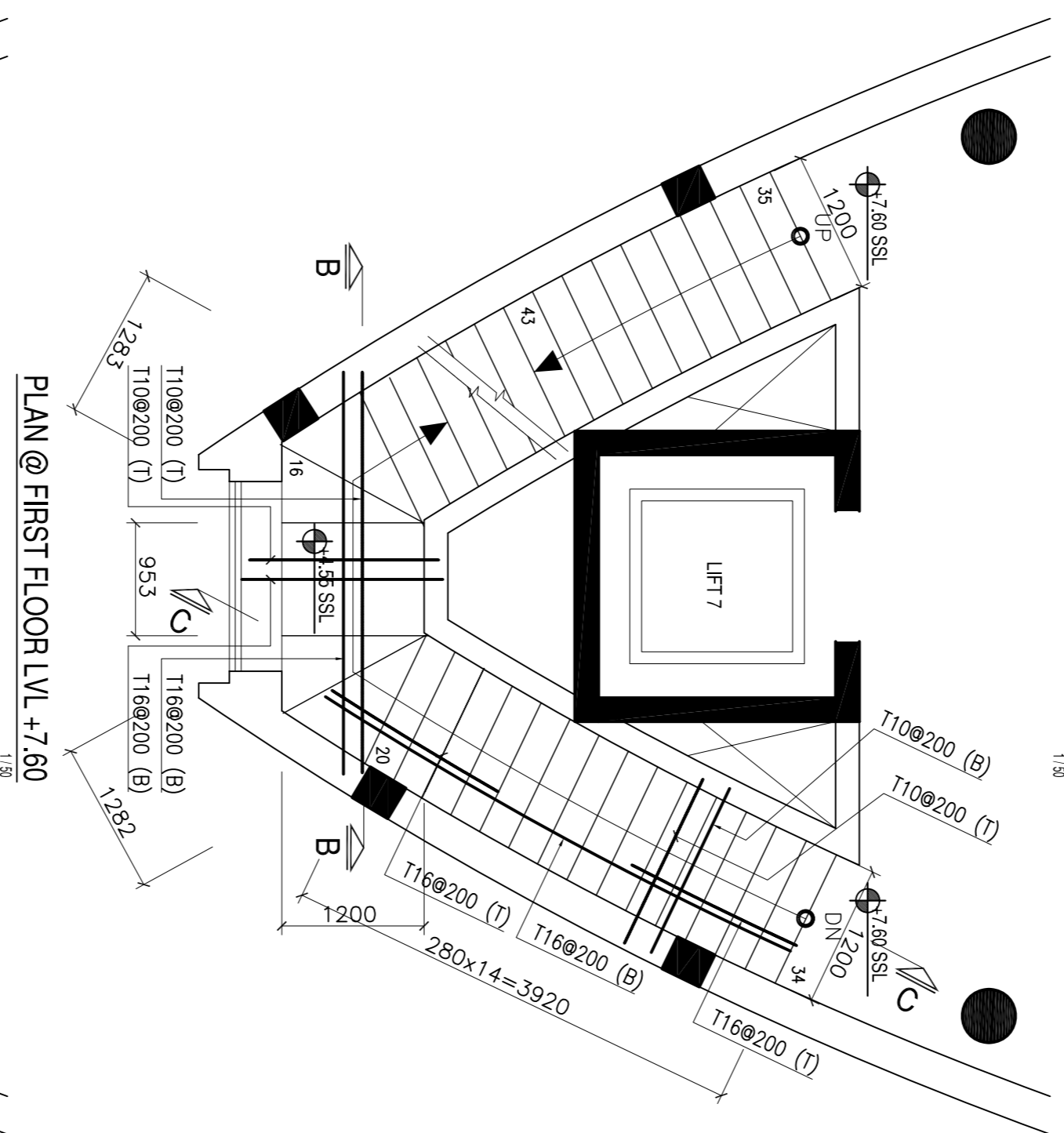
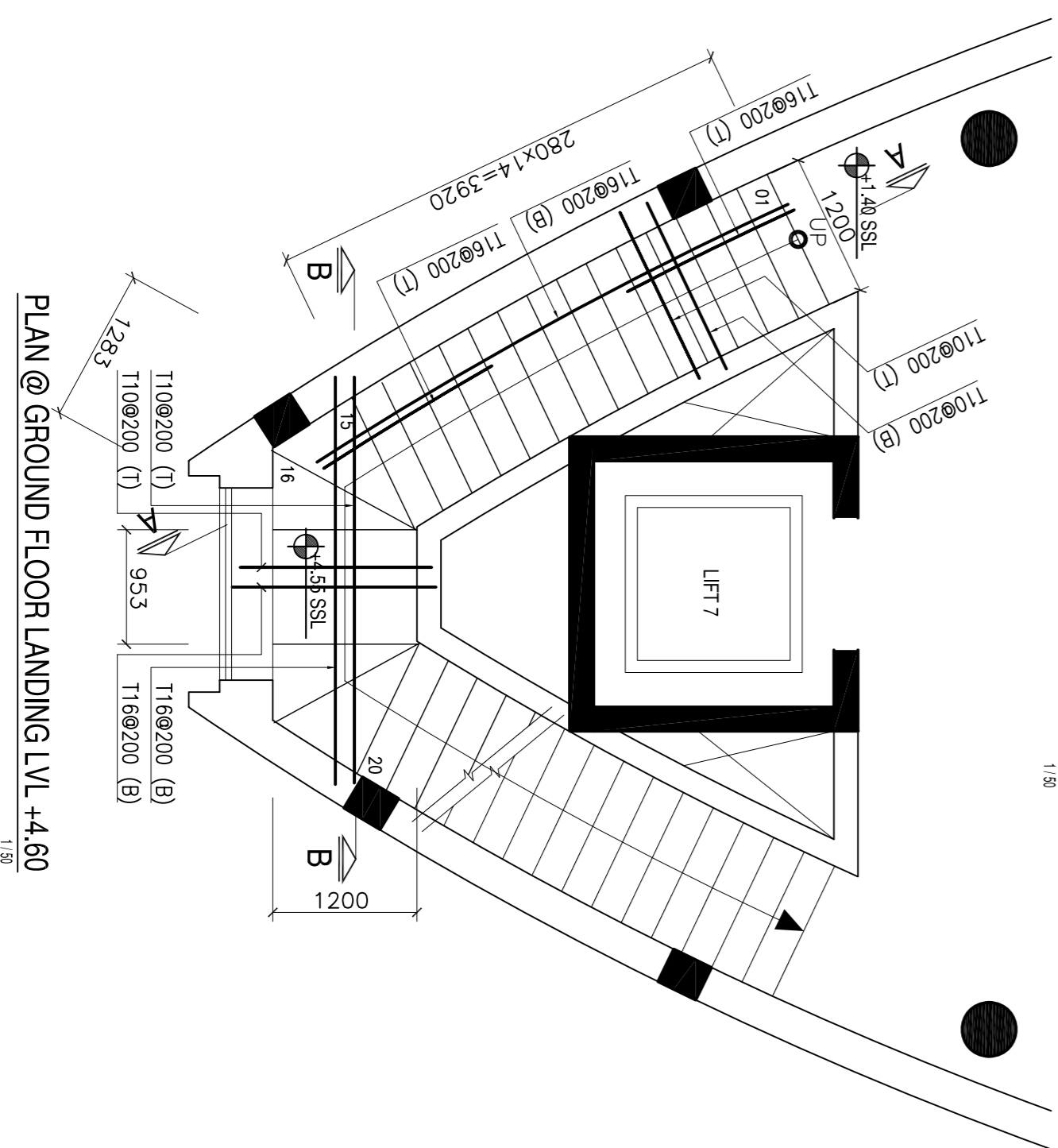


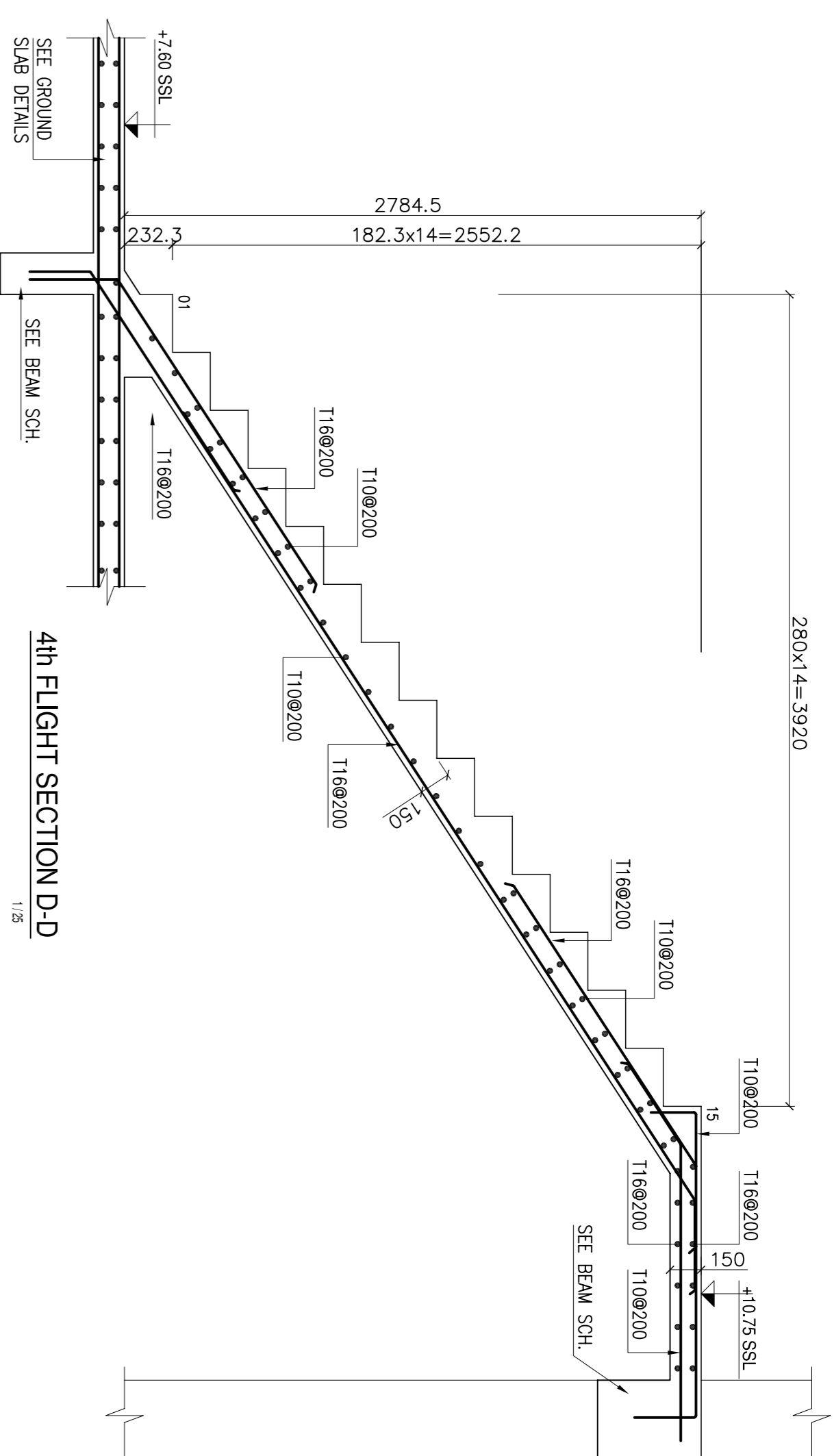
PLAN @ 2nd FLOOR LVL +13.80



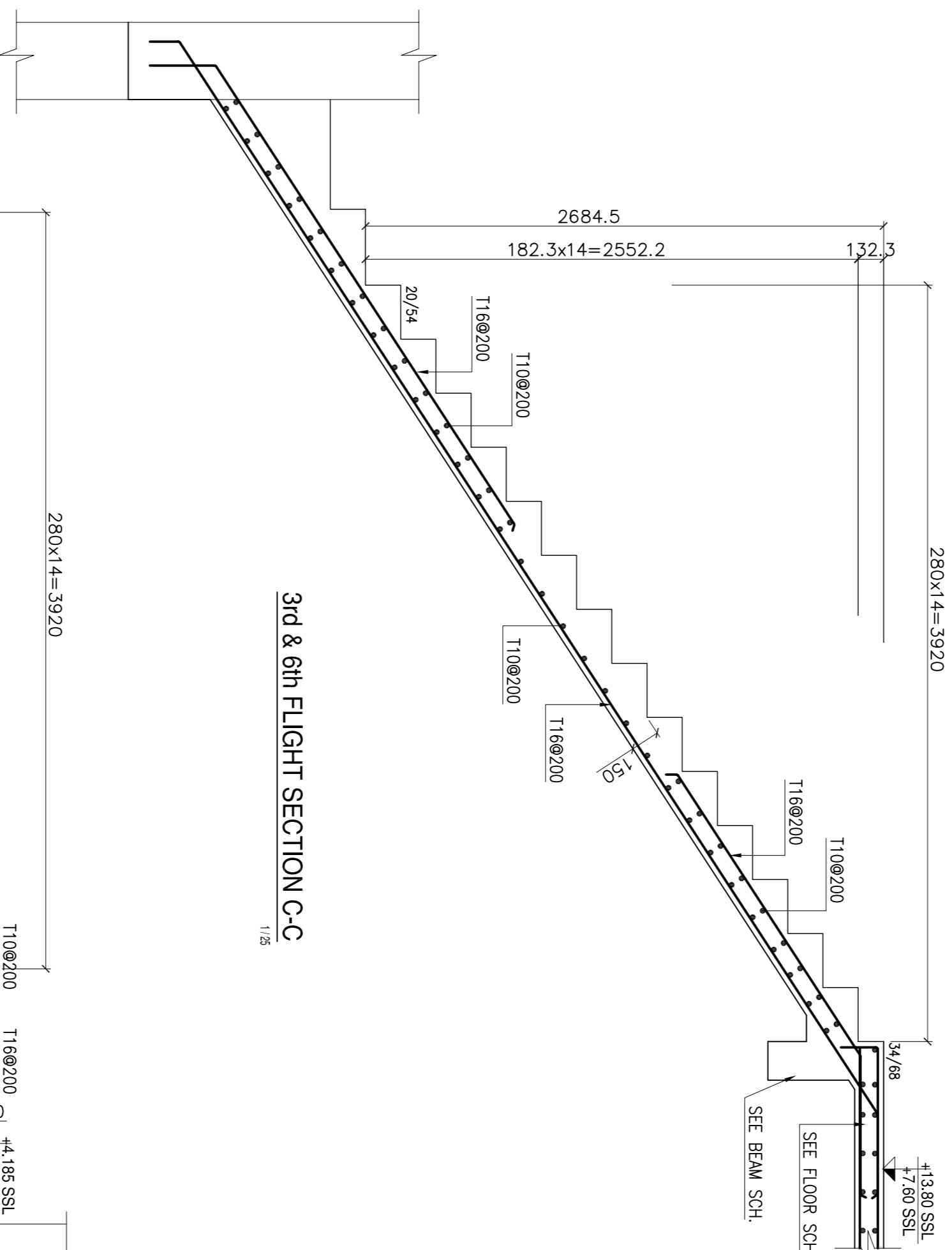
PLAN @ FIRST FLOOR LVL +7.60



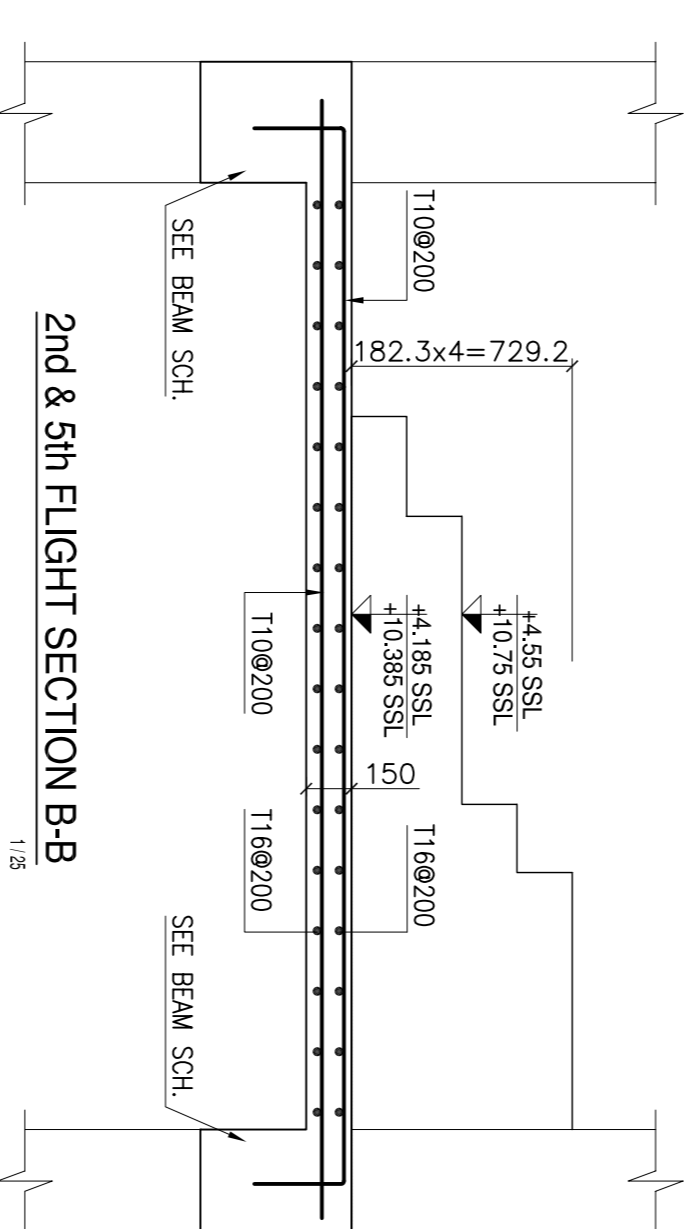
PLAN @ GROUND FLOOR LANDING LVL +4.60



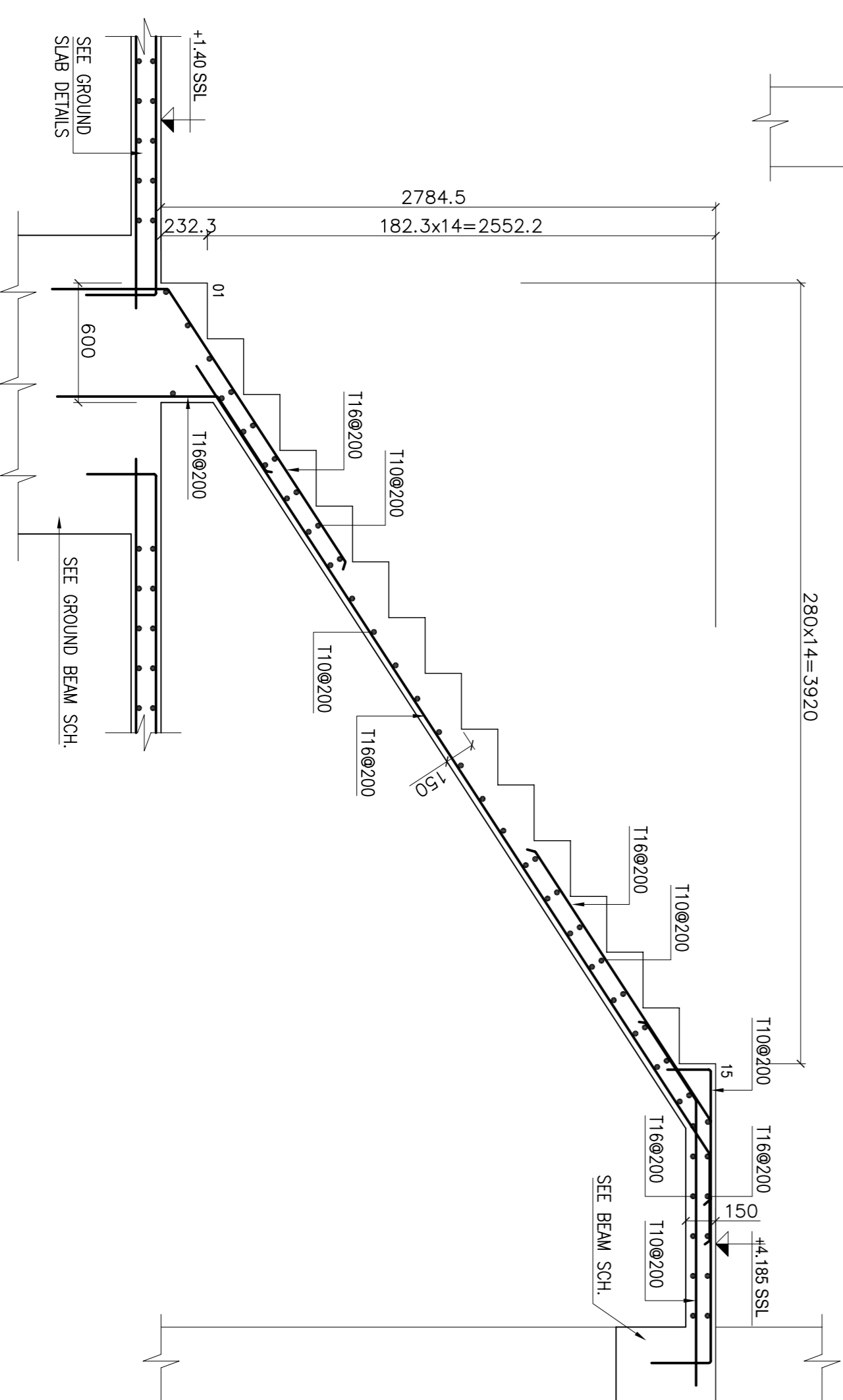
4th FLIGHT SECTION D-D



3rd & 6th FLIGHT SECTION C-C



2nd & 5th FLIGHT SECTION B-B



FIRST FLIGHT SECTION A-A

**NOTES**

- \* ALL DIMENSIONS ARE IN MILLIMETERS. LEVELS ARE IN METERS, UNLESS STATED OTHERWISE.
- \* DRAWING SHOULD NOT BE SCALED.
- \* FOLLOW WRITTEN DIMENSIONS ONLY.
- \* THIS DRAWING IS TO BE READ WITH RELEVANT ARCH, STRU, MECH, & ELEC. DRAWINGS.
- \* SOIL BEARING CAPACITY IS ASSUMED TO BE 300 KN/m<sup>2</sup>. THE CONTRACTOR SHALL VERIFY THE ACTUAL SOIL BEARING CAPACITY BEFORE PROCEEDING WITH THE WORKS.
- \* ALL BLINDING CONCRETE SHALL HAVE A MINIMUM CRUSHING STRENGTH OF 15N/mm<sup>2</sup>.
- \* ALL REINFORCED CONCRETE SHALL HAVE A MINIMUM CRUSHING STRENGTH OF 30N/mm<sup>2</sup> USING ORDINARY PORTLAND CEMENT AND 20mm MAXIMUM SIZE AGGREGATE.
- \* BLOCK WORK SHALL HAVE A MINIMUM CRUSHING STRENGTH OF 7N/mm<sup>2</sup>.
- \* REINFORCEMENT COVER FOR REINF. CONCRETE BELOW AND ABOVE GROUND:
  - ABOVE GROUND : 65mm
  - BELOW AND ABOVE GROUND:
    - COLUMNS: 25mm (INTERNAL)
    - COLUMNS: 40mm (EXTERNAL)
    - BEAMS : 25mm (INTERNAL)
    - BEAMS : 40mm (EXTERNAL)
    - SLABS : 20mm

REV.	DESCRIPTION	BY	DATE

ENGINEERS COMMENTS / APPROVAL

CONSULTANT  
  
 Grid Design Solutions P.Ltd  
 Techno Park, Thiruvananthapuram,  
 Kerala, India-695022  
 Tel : +914712272977  
 Fax : +914712272977

OWNER	
LOCATION	
DISCIPLINE	STRUCTURAL
PROJECT	

**STAIR 4 (MEETING ROOM)  
REINFORCEMENT DETAILS**

SCALE		CHECKED	K.C
DATE		DRAWN	M.P
DESIGNED	IRU	DRG. NO.	
		REV.	